

Svensk Standard, Stockholm

c/- Wagner

Dansbanevägen 33, 1 tr. n.,

12631 Hägersten

Sweden

Dear Ola, Markus, Sara and Rutger,

Tristan and I have been wandering the lanes for weeks now.

At first we were attracted to the dirtiest and the ugliest of them: the lanes that felt like vertical sewers. Tiring of wading through the rubbish, however, we soon turned our attention to the sleaziest lanes which thread through the business district, behind the strip clubs and seedy bars and corporate headquarters and law courts. Eventually, we became dissatisfied with our own journeys and elected to follow others, who - more often than not - never went into the lanes, and when they did, disappeared into the rear doors of what we can only imagine might be workplaces, but which might have been something entirely different.

The mystery, it seems, was always on the other sides of those doors and walls: in the private spaces behind and alongside the lanes. In the buildings. The lanes themselves seemed to hold little mystery of their own: everything seemed so familiar, just a repetition of elements. A basic geometry. The familiar, the recognisable, that which makes the laneways what they are, and in turn Melbourne what it is, had reached a point of saturation.

Perhaps we can only value that which is unknown, foreign, strange. We feel this must be the case.

In order to advance our project further, we therefore send you the unappreciated, banal and everyday artefacts which we collected in our journeys, objects (and, indeed signs) which make up the graphic and material language of the lanes – a language which we (like perhaps millions of other Melbournians) are presently unable to read, in our current state of distracted overexposure. We hope that you might take them and through your own work make them foreign to us again. We would like you to estrange us from them, just as you are estranged from us.

Take one or many, and do what you can. If you need any further information (dimensions, materials, or anything else that may be useful in this task), please do not hesitate to contact us.

With grateful thanks,

Your Colleagues in Melbourne.

Helen and Tristan.

Svensk Standard, Melbourne

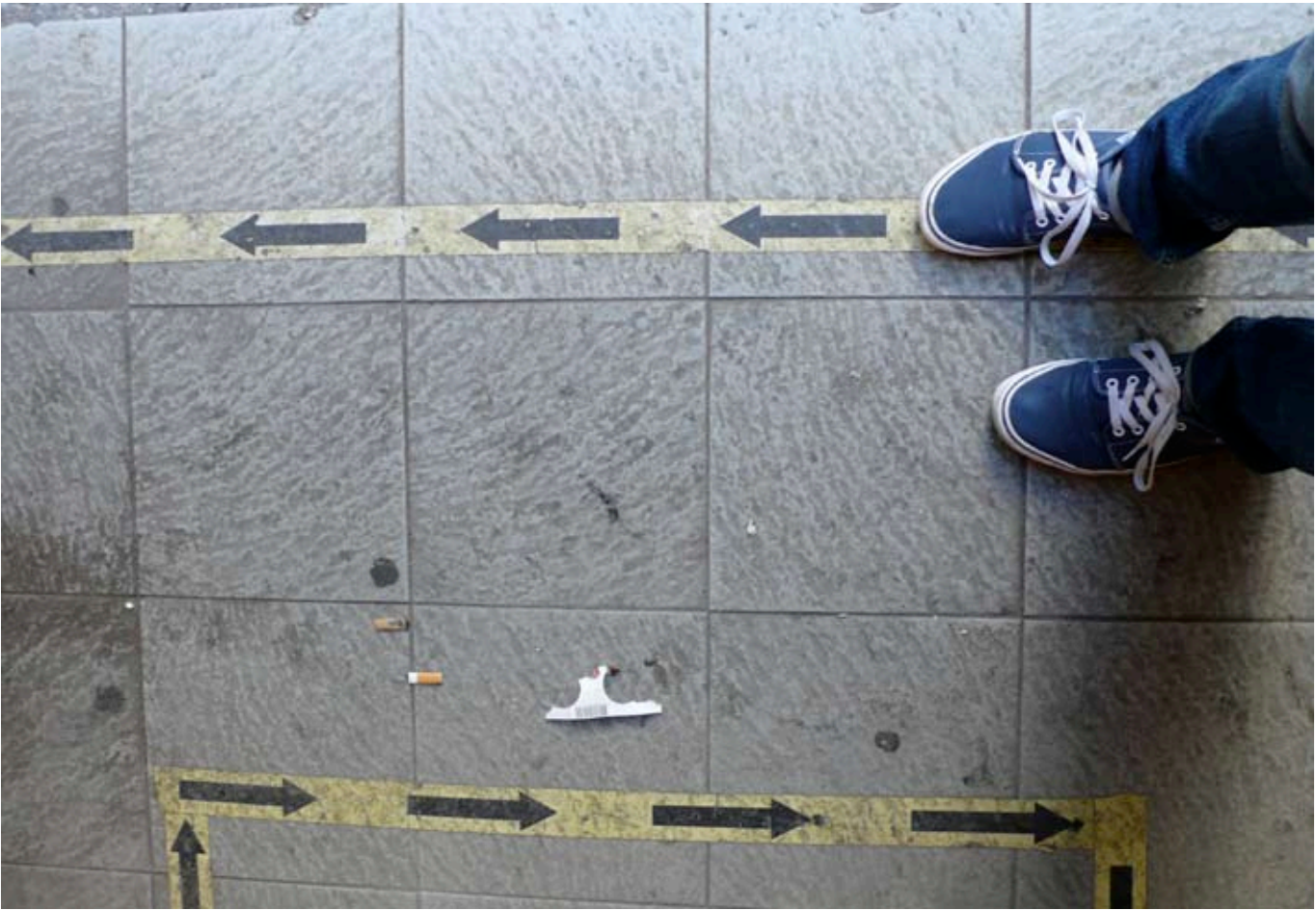
c/- 84 Lothian Street

North Melbourne

VIC 3039

Australia.

SIGNS







OBJECTS

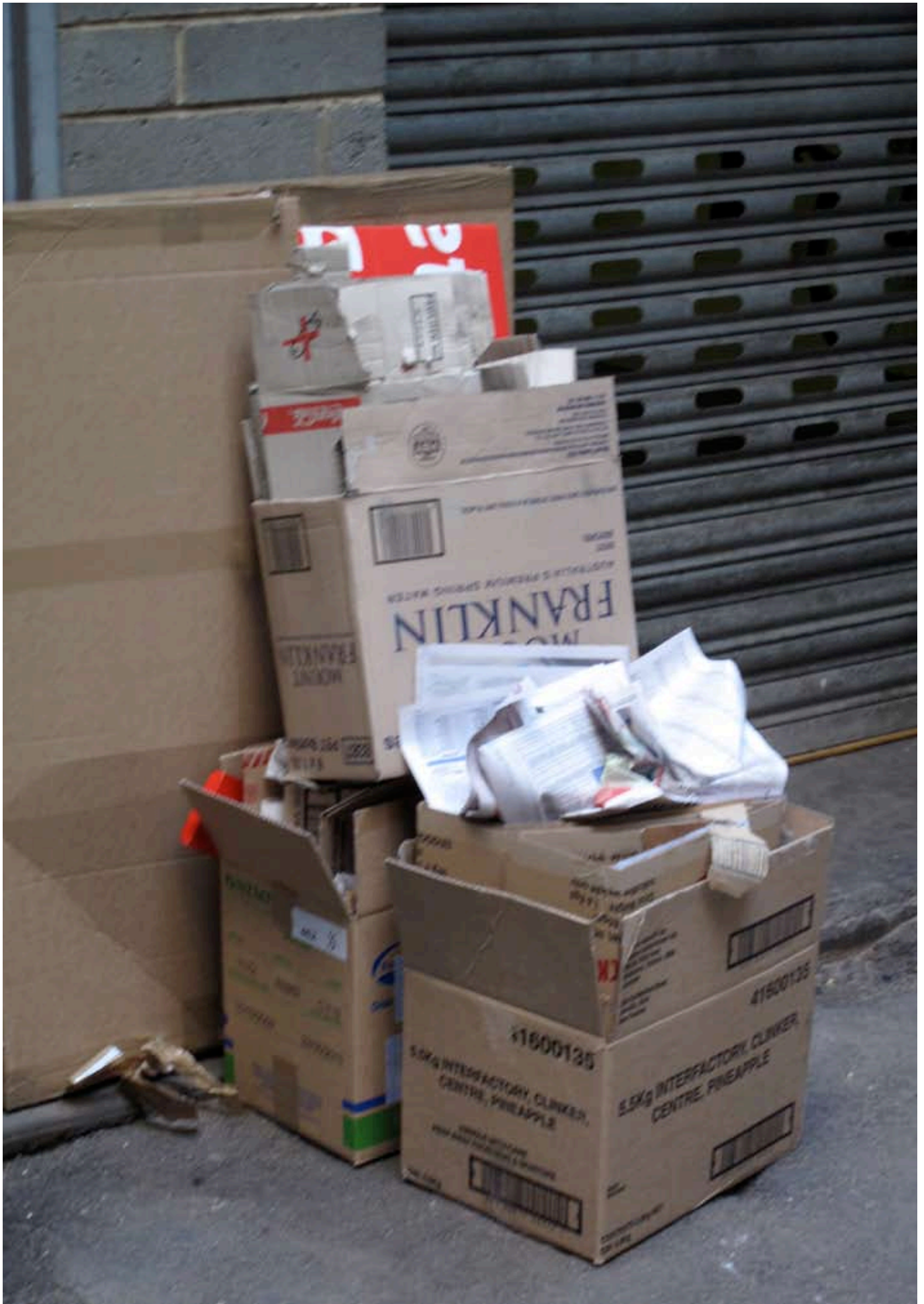
ANTI-DRUG LIGHT

700x100mm



BOXES

miscellaneous sizes



REFLECTORS

100x100mm



CONVEX MIRRORS

500mm in diameter



MILK CRATES

340mm cubed



MILK CRATES

340mm cubed



MILK CRATES

340mm cubed



MILK CRATES

340mm cubed

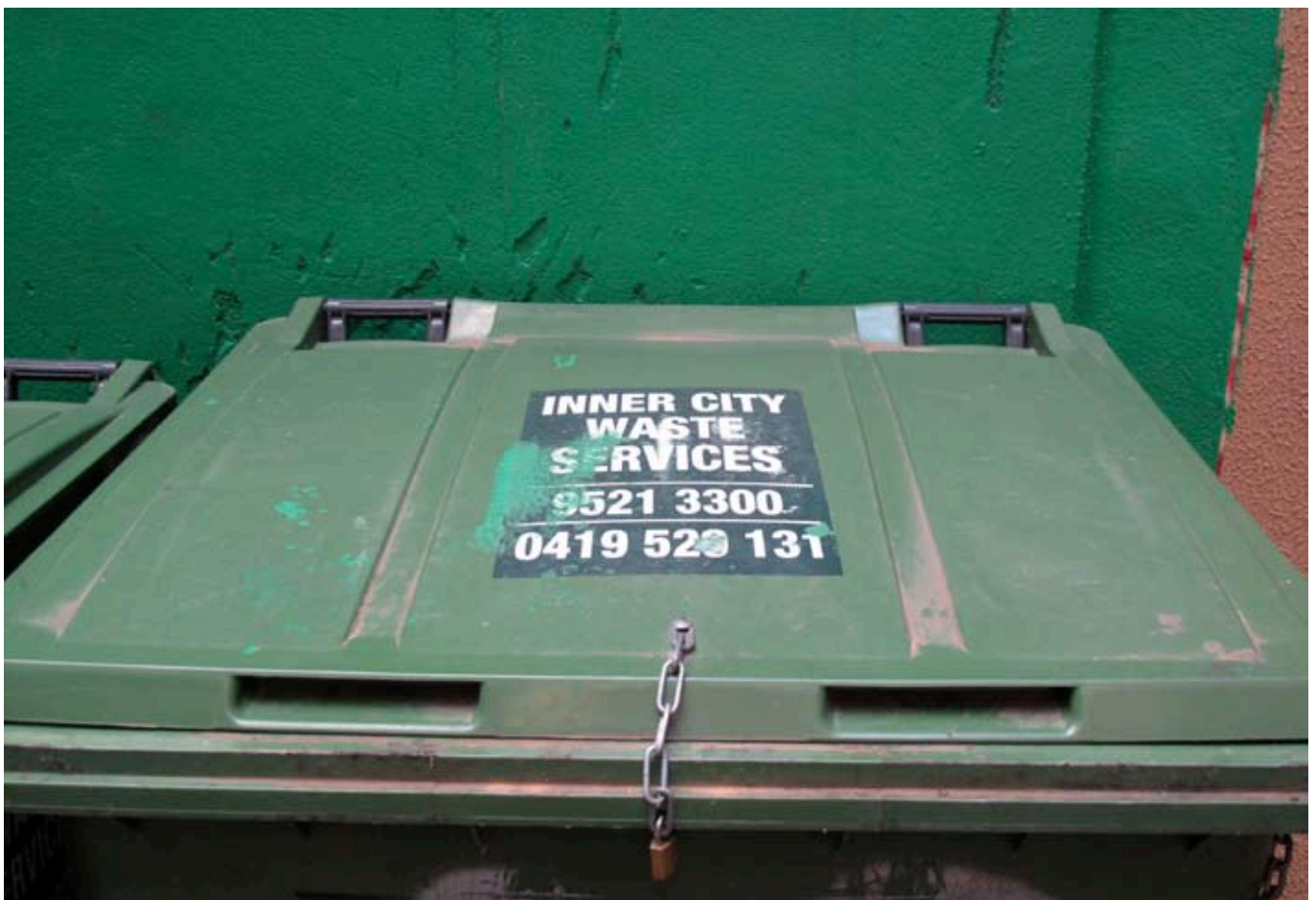


MILK CRATES

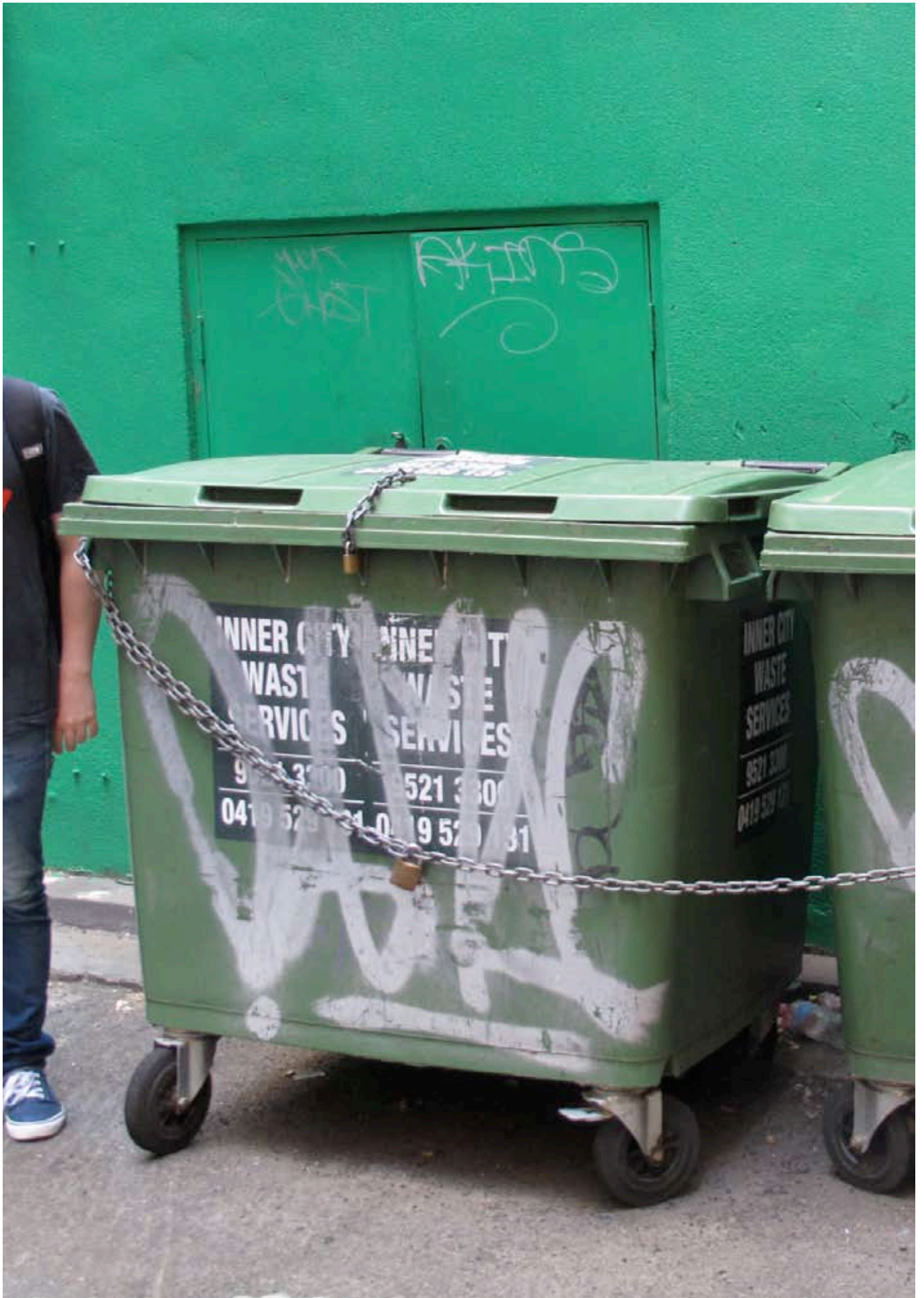
340mm cubed



LARGE BINS



LARGE BINS



MEDIUM BINS



MEDIUM BINS



MEDIUM BINS



MEDIUM BINS



SMALL BINS



SMALL BINS



SMALL BINS

